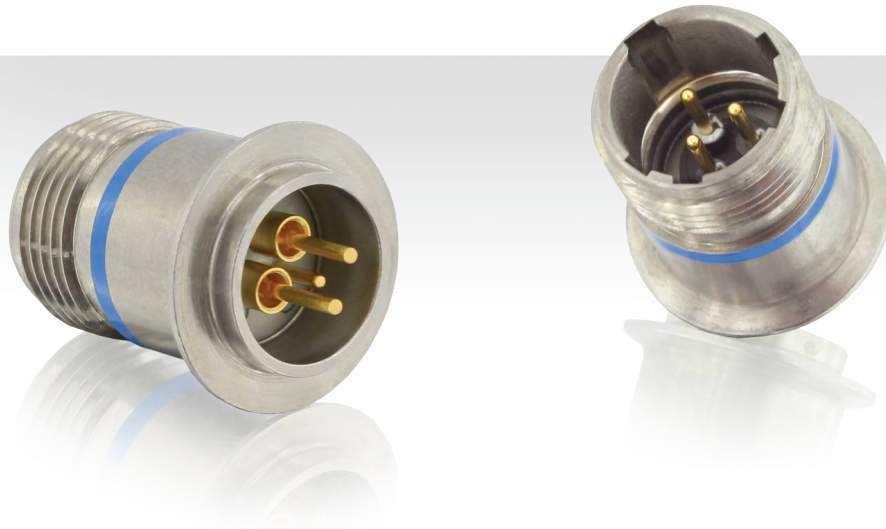


Kp/Kn Contacts Hermetic Connectors



Kp/Kn Contacts for Thermocouple Sensors

Hermetic connector based on EN2997 and ESC10 standard with Kp/Kn contacts to be used for thermocouple sensors.

Hermetic ■ Leak rate $<1.10^{-7}$ atm.cm³/s
Solder flange for full hermetic integration.
Compact.

Kp/Kn ■ Adapted to temperature sensor.

EN2997/ESC10 based ■ High temperature.
High vibration level.
Standard mating interface.

Customizable ■ Specific flange design available.
Other standard possible on request: EN3646,
MIL-DTL-38999, MIL-DTL-26482

Description

- Glass sealed hermetic:
 - High hermeticity performance
 - Compact low profile
- Various mounting styles:
 - Compact solder mount receptacle
 - Easy to install square flange receptacle
 - Easy to replace jam nut receptacle
- PC tail or eyelet contacts



Technical features

Mechanical

- **Shell:**
Passivated Stainless steel (304L or 316L)
- **Seals:** Silicone elastomer
- **Contacts:**
Kp/Kn (NiCr/NiAl)
FeNi (Iron Nickel)
- **Contact plating:**
Gold plating.
Contact without plating available, please consult us.

Electrical

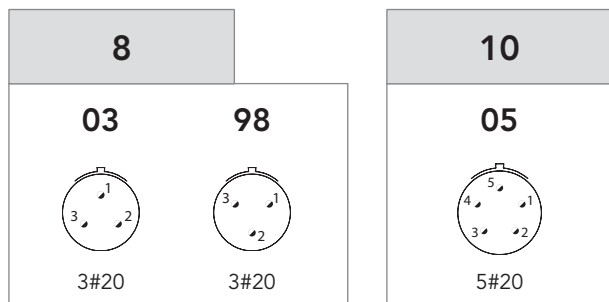
- **Insulation resistance:** > 5000MΩ
- **Dielectric withstanding voltage:** 1500 Vrms

Environmental

- **Operating temperature:**
For EN2997 connectors
 - . Class Y: -65°C to 200°C
 - . Class YE: -65°C to 260°C cyclic
- **Hermeticity:**
Leak rate <math> < 10^{-7}</math> atm.cm³/s (helium gas test)
- **Salt spray:** 500 hours

Contact layouts

View from front face of male insulator



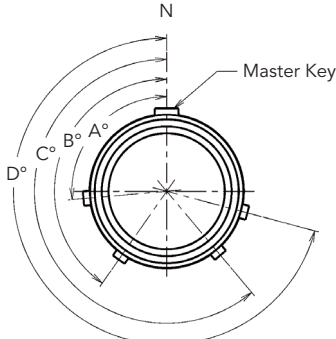
Standard arrangements.
Other arrangements or contact distribution on request.

Shell size	Layout	Contact number				
		1	2	3	4	5
08	08-03	Kn	Kp	FeNi	-	-
	08-98	Kn	Kp	FeNi	-	-
10	10-05	Kp	Kn	Kp	Kn	FeNi

Ordering information

Basic series	8533	1	Y	10	05	P	N	XXX
Shell type:								
1: Solder mount receptacle								
2: Square flange receptacle								
7: Jam nut receptacle								
Class:								
Y: 200°C								
YE: 260°C								
Shell size: 08 - 10								
Contact layout: See previous page								
Contact type:								
P: Pin								
Orientation: N - 6 - 7 - 8 - 9 - T - V - Y (see below)								
Specification: Suffix code for customization (contact termination type, specific flange, plating over contacts, ...), please consult us								

Hermetic thermocouples also available on request for EN3646, MIL-DTL-38999, MIL-C-26482 standards.

Orientation										
 <p>Front face view of receptacle</p>	Shell size	Angles	N	6	7	8	9	T	V	Y
	08	A° B° C° D°	105 140 215 265	102 132 248 320	80 118 230 312	35 140 205 275	64 155 234 304	- - -	- -	- -
	10	A° B° C° D°	105 140 215 265	102 132 248 320	80 118 230 312	35 140 205 275	64 155 234 304	- -	- -	25 115 220 270

For further information contact us at technical.emear@souriau.com (Europe - Asia - Africa)
technical.americas@souriau.com (North America)
 or visit our web site www.souriau.com